

Low PIM LTE MiMO Panel Antenna

Model: DP0727G8P2

V-Pol and H-Pol, 698-960MHz, 1710-2700MHz, 8dBi, Indoor or Outdoor Optional

Application:

Indoor/in-building or outdoor Coverage

LTE System in crowded building to insure data speed

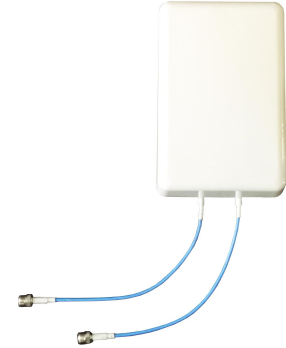
CDMA,GSM, DCS, 3G/UMTS, WiFi, ISM Application

Features:

Wide bandwidth

Suitable for wall mounting and pole available

Low, aesthetically pleasing profile



Model:	DP0727G8P2	
Frequency	698~960MHz	1710-2700MHz
Polarization	V	H & V
Gain in Vertical	7±1dBi	8±1dBi
Gain in Horizontal	7dBi	7.5dBi
Horizontal Beamwidth	85°±5° / 60°±5°	70°±5° / 55°±5°
Vertical Beamwidth	60°±5° / 85°±5°	55°±5° / 70°±5°
Front to Back	≥18dB	
Ports Isolation	≥25dB	
VSWR	≤2.0 / ≤1.5	
Passive IM3	<-140dBc (2x tones 2Watts)	
Max Power	50 W	
Mechanical Specification		
Connector	2 x N-Female	
Dimension	305x185x65mm	
Weight	1.2Kg	
Temperature	-40°C~+75°C	