

RFID Panel Antenna with integrated Enclosure

Model: DP915G12E / DP865G12E

Circular or Linear Polarization, 902-928MHz, 865-868MHz 12.5dBi, Diameter: 450x450x90mm

Application:

RFID, ISM band applications

Wireless LAN systems

SCADA application

Features:

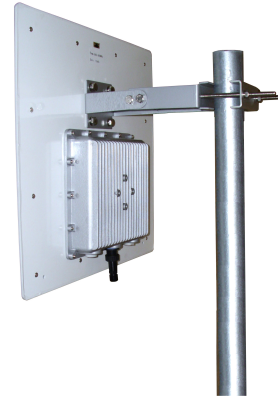
Compact Size, Light weight

Heat-conduct case for holding Module

Superior performance

All weather operation

Includes adjustable mast mount kit



Model	DP915G12E / DP865G12E
Frequency	902-928 MHz / 865-868MHz
Polarization	Linear/Circular
Horizontal Beam Width	45 deg
Vertical Beam Width	45 deg
Gain	12.5 dBi
VSWR	<1.4: 1
F/B	>30dB
Max Power	30 W
Impedance	50 Ω

Mechanical Specification

Radome Material	ABS with UV Protection
Lightning Protection	Direct Ground
Connector	Integrated SMA-male/ Customized
Weight	4.2 kg
Size	450x450x90mm
Mount Pole Diameter	35-50mm
Wind Loading (Frontal)	180km/h
Operating Temperature Range	-40°C to +70°C
Storage Temperature	-45°C to +75°C